

CENTRAL LOCKING 1100 FITTING INSTRUCTIONS



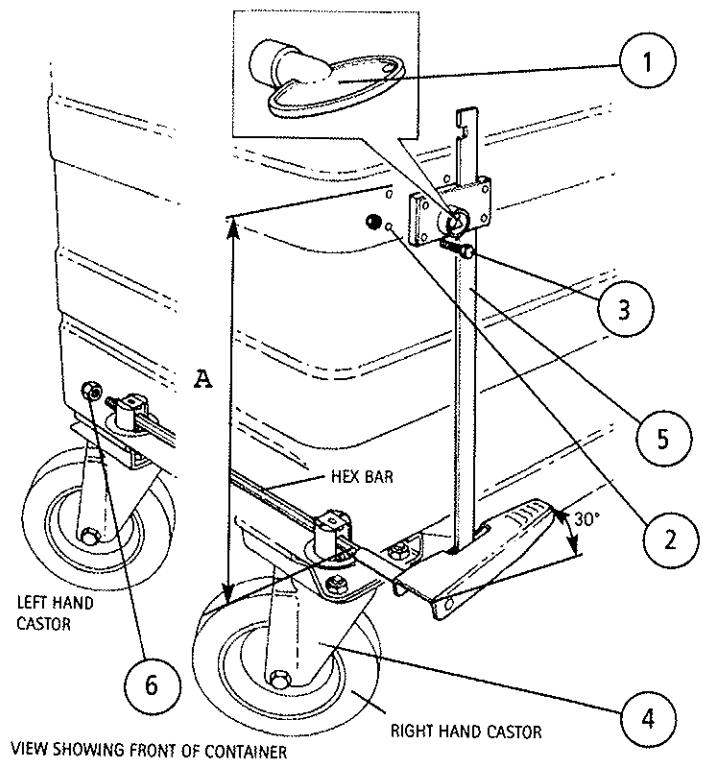
CHECK CONTENTS:

(1) KEY	1 OFF
(2) M5 NYLOC NUT (FITTED INSIDE OF CONTAINER)	4 OFF
(3) M5 BOLT 20mm LG.	4 OFF
(4) CASTORS 200mm C/LOCK	2 OFF
(5) CENTRAL LOCKING	1 OFF
(6) NYLOC NUT	1 OFF

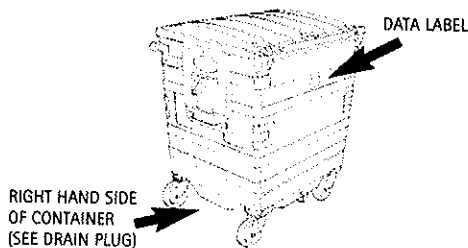
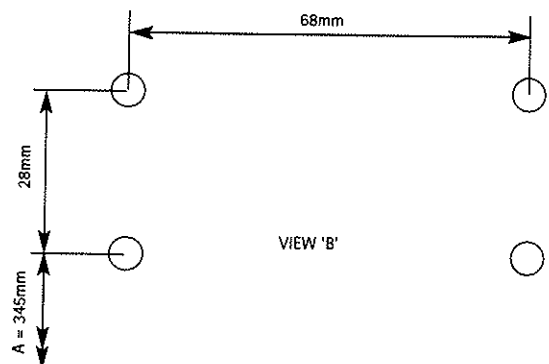
ENSURE THAT THE CONTAINER IS SQUARE AND UNDAMAGED

ASSEMBLY:

- A) With the container lid open - turn the container upside down.
- B) Attach central locking castors (4) to the front castor brackets.
- C) Position castor on castor bracket.
- D) Place bolt (2) through holes and assemble nut (3).
- E) Tighten all bolts.
- F) Repeat assembly on 4 corners.
- G) Return containers to stand on castors.
- H) Drill 4 holes 6mm dia. (shown in view 'B') ensure lock fits correctly.
- I) Pass hexagon shaped bar through right hand castor & left hand castor (check angle of pedal approx 30 degree).
- J) Attach nyloc nut (6).
- K) Attach flat strip to pedal and place lock on pre-drilled holes.
- L) Bolt lock to body (nuts on inside).
- M) Press pedal down & ensure lock engages & brakes work.
- N) Open lock using key (1) & check brakes are released.



VIEW SHOWING FRONT OF CONTAINER



QUERIES?

Telephone Customer Services on 01299 251333

Issued by: Spares department
Egbert H Taylor Oak Park, Ryelands Lane, Elmley Lovett, Worcestershire. WR9 0QZ

TOOLS REQUIRED:

- 10mm A/F spanner
- 17mm spanner, socket & ratchet
- 2-9mm A/F spanner
- 6mm twist drill
- Tape measure
- Electric drill